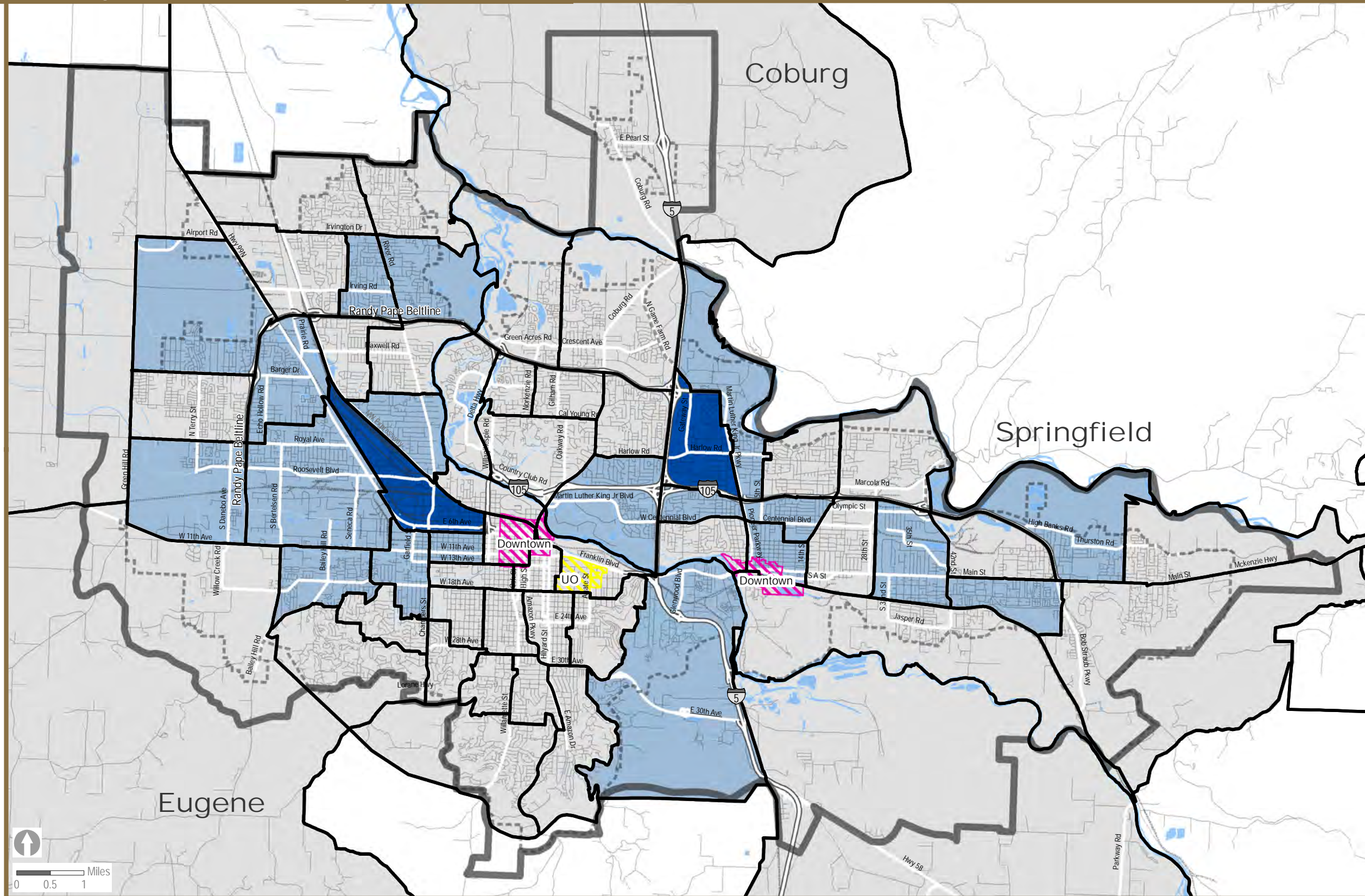


# Equity & Opportunity Assessment Employment Opportunities

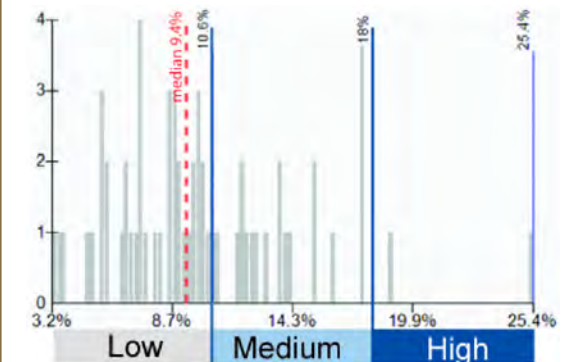
# Unemployment



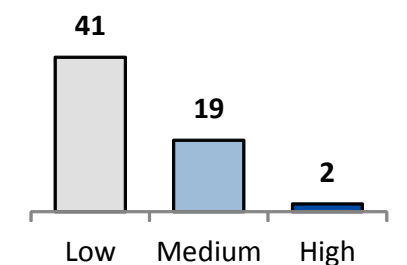
This map shows the unemployment rate by tract. About 10% of the population was unemployed in the Metropolitan Planning Organization area census tracts.

The unemployment rate represents the number of people that are unemployed as a percent of the civilian labor force. The civilian labor force includes people who are age 16 and over that are working, or actively looking for work, but does not include people on active duty of the U.S. Armed Forces, or living in institutions. Employment data is asked of people for the "reference week", which is usually the week preceding the questionnaire completion.

The full range of data for each map has been divided into thirds to create low, medium, and high percentage categories. A histogram is also included to show that the data is not necessarily distributed equally across these three categories. About 8% of the unemployed population are in the top 2 census tracts in the highest percentage category.



The chart below shows the number of tracts in the Metropolitan Planning Organization Area that have low, medium, and high percentages.



Map date: 9/12/13 Map data: U.S. Census Bureau, ACS 2007-11, Table B23025.  
 Caution: This map is based on imprecise source data, subject to change, and for general reference only. The work that provided the basis for this map was supported by funding under an award with the U.S. Department of Housing and Urban Development. The substance and findings of the work are dedicated to the public. The author and publisher are solely responsible for the accuracy of the statements and interpretations contained in this publication. Such interpretations do not necessarily reflect the views of the Government.

- Census 2010 Tracts
- Metropolitan Planning Organization Area boundary
- Urban Growth Boundaries

- Percent of the Population Unemployed**
- Low: 3.2% - 10.9%
  - Medium: 11% - 17.9%
  - High: 18% - 25.4%